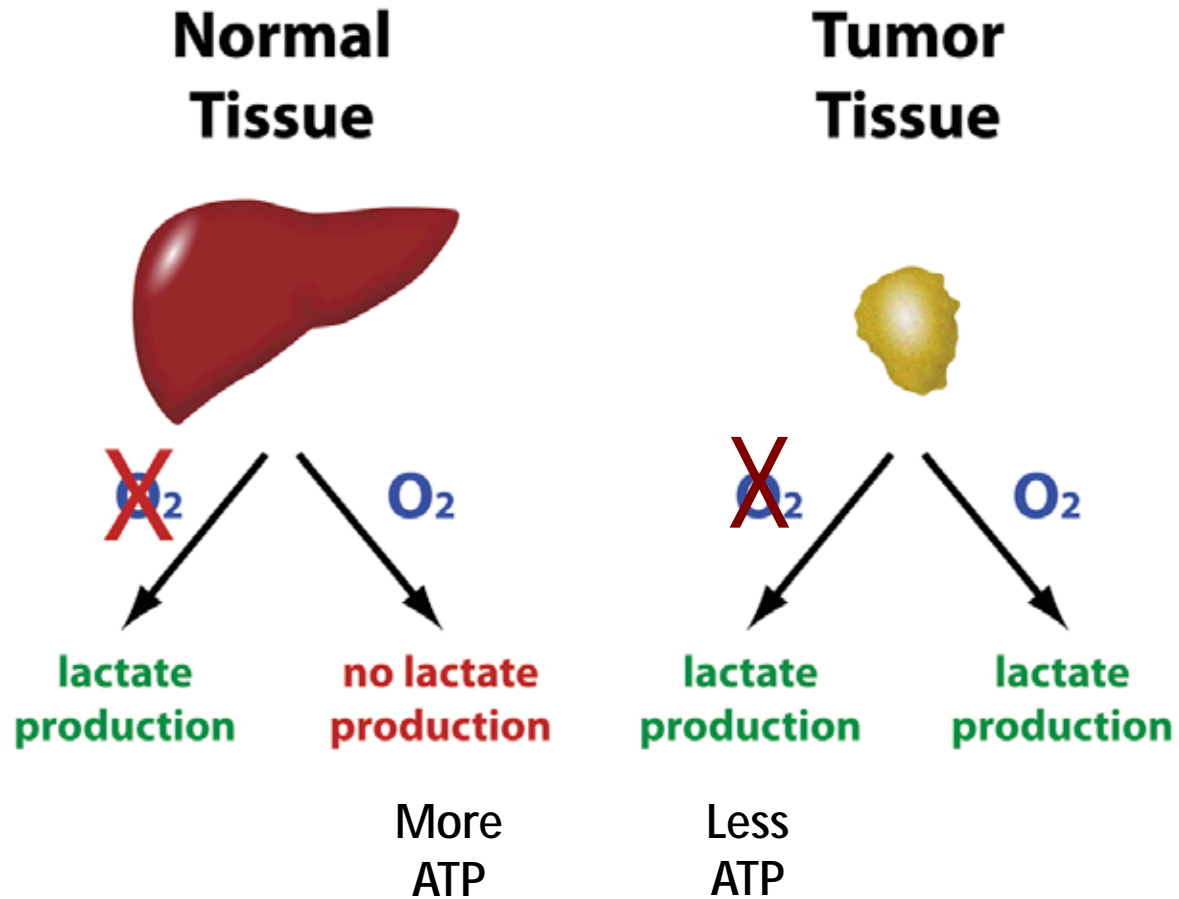
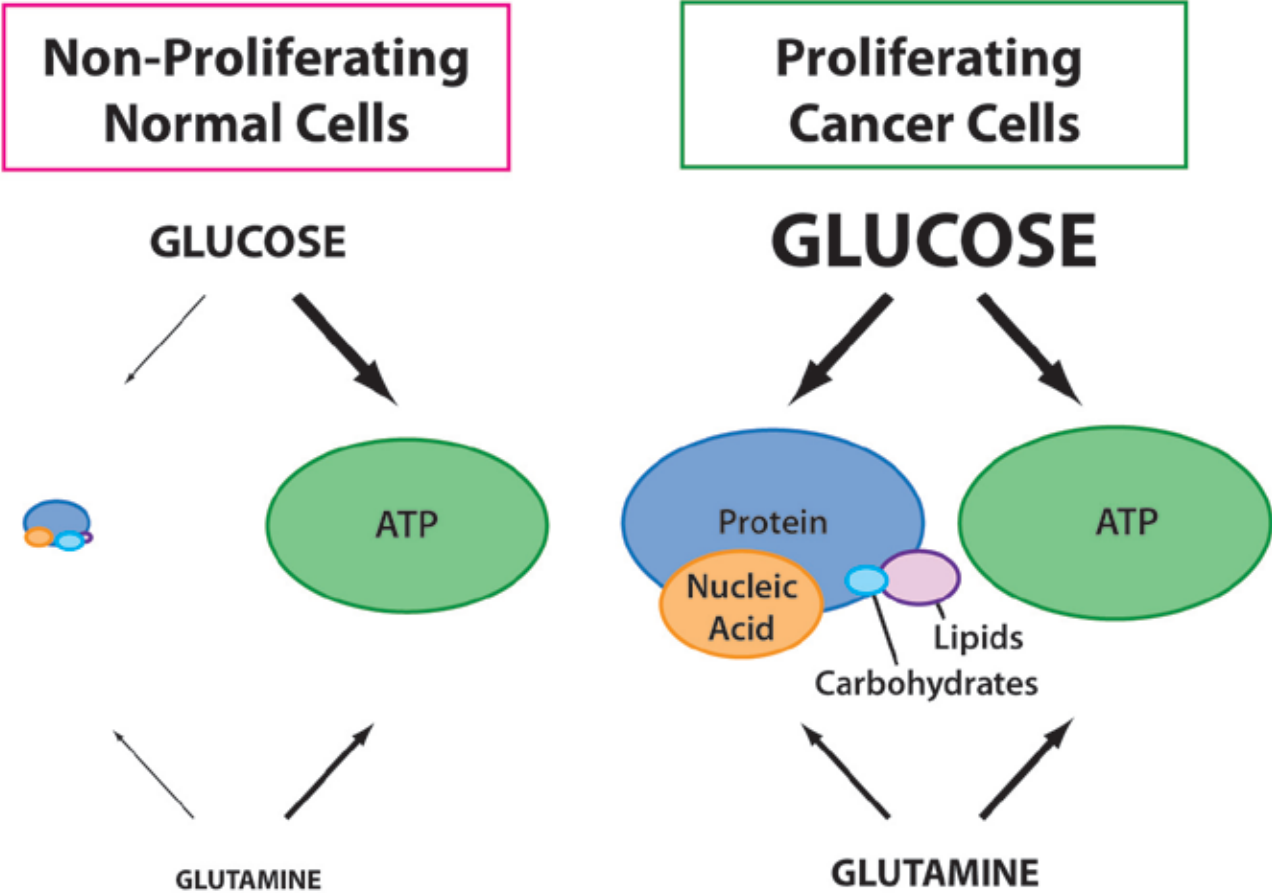
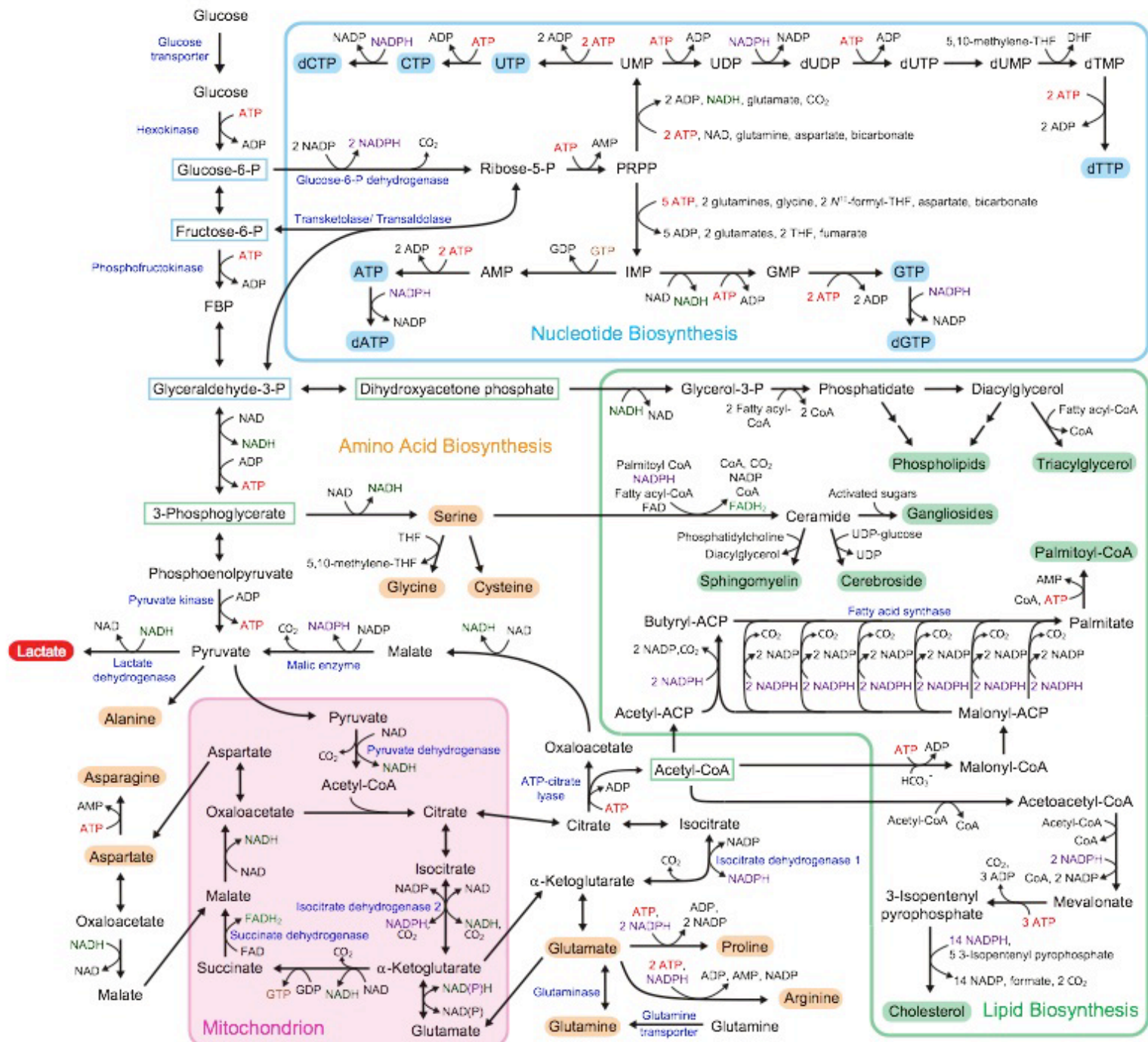


# Tumor metabolism



# Increased nutrient uptake in cancer supports biosynthesis





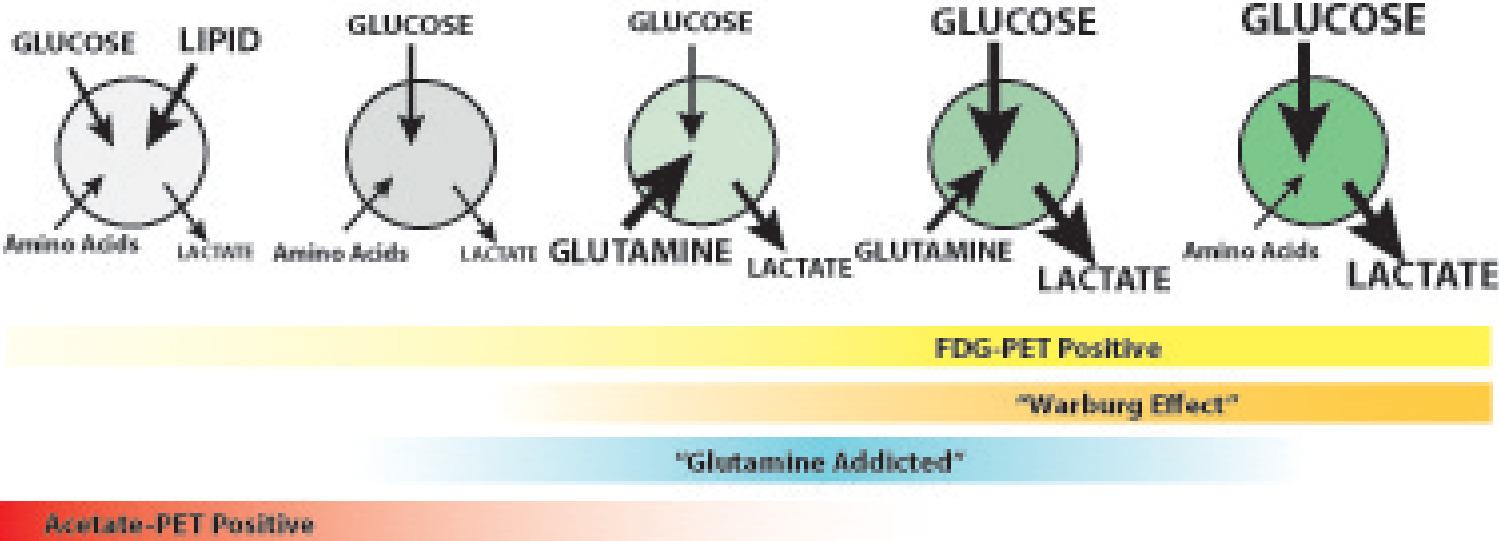
Consideration of metabolic enzyme targets as critical for:

1. Generating precursors critical to biosynthesis

2. Supporting cellular process during periods of stress

Some targets could be important for both.

# Not all tumor cells use the same metabolism to proliferate and survive



# Cell type and environment contribute to metabolic phenotypes in cells

